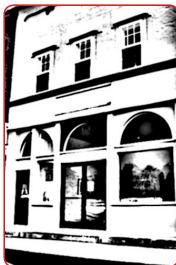


the red ear

presents a glass works show

opening reception:
saturday, march 7, 6-9 pm

show will be on view through march 29th
the red ear is open weekends, 1-6pm



the red ear offers a 1600 sq. foot,
professional space for artists and students to use.

email laurenzadikow@gmail.com for information, or to view the space

from carbondale: take chautauqua rd. west, make left onto IL-127 south. go 9 miles until you pass alto vineyard, then make a slight left onto CR2, follow sign for root beer saloon. turn right onto north elm st, the first intersection, then make a quick right and park. the red ear is located across from the root beer saloon.

you can also take 51 south out of carbondale, and make a right at the yellow makanda water tower—make a quick left following the sign for flamm orchards. pass flamm's, and make a right onto jamestown rd. you will hit a stop sign, make a right onto skyline. at the bottom of the hill, make a left, then a quick right onto north elm st. the red ear is located across from the root beer saloon.